

DEPT. OF ECOLOGY AND NATURAL RESOURCE MANAGEMENT  
(INA)



Norwegian University of Life Sciences, Ås - Norway



## INA – VISIONS FOR 2009-2012

### Vision:

INA shall have a strong educational and scientific environment for the development of knowledge about nature, and human use of nature.

### Values:

- Objectivity
- Quality and thoroughness
- Enthusiasm, curiosity and creativity
- Team spirit



## AREAS OF RESEARCH

- Behavioral ecology
- Biodiversity, evolutionary genetics and conservation biology
- Botany and zoology
- Sustainable forestry, game and fish management
- Renewable energy
- Consequences of area use and habitat changes
- Market, resource economics and planning
- Nature-based tourism
- Population ecology
- Resource surveying
- Tree technology
- Eco physiology
- Ecotoxicology





## AREAS OF PRIORITY

- Renewable energy – potential and environmental effects
- Climate change – effects, remedies and adaptations
- Protection and utilisation of natural resources – conflicts and opportunities
- Ecology, biodiversity and conservation biology



[www.umb.no](http://www.umb.no)



## WHAT DO WE OFFER?

- Research
- Education
  - Bachelor's degree programmes
  - Master's degree programmes
  - PhD
- Post-graduate studies
- Public contact; innovation and business development





## Research groups

1. BIODIV      Biodiversity, systematics and evolution
2. WILMA      Wildlife management and ecology
3. PAIN        Plant-animal interactions
4. RØMS        Resource economics, markets and society
5. SKOG&3     Forest and wood
6. BEAM        Environmental change biology



## STUDY PROGRAMS – BACHELOR LEVEL (3 YEARS)

- Ecology and Management of Natural Resources
- Forest Sciences
- Renewable Energy





## STUDY PROGRAMS – MASTER LEVEL (2 YEARS):

- Ecology (given in English):
  - General Ecology
  - Tropical Ecology and Management of Natural Resources
- Forest Sciences
- Management of Natural Resources
- Nature-based Tourism





## Master Ecology:

### - GENERAL ECOLOGY

You can choose your specialization within:

- Behaviour and population ecology
- Pollination and reproductive biology
- Plant ecophysiology
- Ecological entomology
- Plant systematics

or

- Molecular evolution and genetics.



## Master Ecology:

### - TROPICAL ECOLOGY AND MANAGEMENT OF NATURAL RESOURCES

- Collect field data in some of the most spectacular wildlife areas in Africa, Asia and Latin America!

**The programme provides an advanced understanding of tropical ecosystems:**

- Biodiversity of the tropics
- Conservation and management of natural resources
- 2-year programme
- All courses are given in English



## EXAMPLES OF COURSES GIVEN IN ENGLISH AT INA

### **Bioethics:**

- BIO340 Bioethics

### **Botany:**

- BOT230 Plant Ecology
- BOT310 Advanced Taxonomy of Plants
- BOT340 Photobiology
- BOT350 Pollination and Reproductive Ecology of Plants

### **Ecology:**

- ECOL200 General Ecology
- ECOL201 Ecology Essay
- ECOL250 Tropical Ecosystems and Biodiversity
- ECOL300 Ecological Scientific Methodology
- ECOL310 Global Change Ecology
- ECOL350 Restoration Ecology
- ECOL380 The Ecology and Management of Rivers and Lakes



## EXAMPLES OF COURSES GIVEN IN ENGLISH AT INA

### **Genetics:**

- GEN220 Genetic basis of biodiversity
- GEN320 Molecular markers for genomics
- GEN340 Molecular Evolution

### **Management of natural resources:**

- NATF210 Environmental monitoring
- NATF300 Conservation Biology
- NATF320 Ecology and management of natural resources in the tropics
- NATF350 Special Topics in Ecology and Natural Resource Management

### **Zoology:**

- ZOOL310 Behavioural and Population Ecology





Approximately 200 courses are given in English  
in other departments at the University:

Development studies

Economics

Food science

Fish farming

Technology, etc.

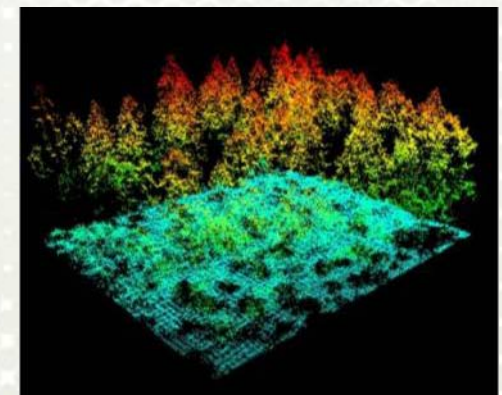
**FOR MORE INFORMATION:**

**[www.umb.no/english](http://www.umb.no/english)**



## A BRIEF VIEW OF RESEARCH – EXAMPLES OF PROJECTS

- The Scandinavian brown bear project
- Airborne laser as a distance measuring technique for surveying forest ecosystems
- Flowers and bees: from sex to natural resource management
- Land-use and Ecosystem function in forest landscapes
- The future role of biomass energy in Norway - an interdisciplinary technological, economical and environmental research program
- Process modelling of forest ecosystems
- Sustainability of moose populations in Norway



## STAFF MEMBERS

Professors	= 19
Associate professors	= 13
Temporary scientific	= 11
Post. Doc.	= 9
Ph.D. students	= 28
<u>Tech &amp; adm</u>	<u>= 17</u>
In all:	97



## PRODUCTION

Type of output	2005	2006	2007	2008
Articles:				
In international scientific journals with referee	72	78	96	91
In national scientific journals with referee	5	1	1	2
In scientific antology	8	2	2	4
Ph.D.- and Dr.Philos.-dissertations	4	12	9	16
Master theses (number of candidates)	48 (53)	48 (55)	55 (57)	47 (50)





## INA accounts – turnover by source of funding (in 1000 NOK)

	2005	2006	2007	2008
University grant & internal	39 151	41 580	40 791	46 051
Communities and counties	26	258	187	49
Governmental	2 097	3 520	3 821	4 840
Norwegian Research Council	11 563	11 278	12 985	12 041
Private	1 221	1 232	2 851	2 696
Foreign foundations og EU	1 456	1 746	1 845	2 176
SUM	55 514	59 614	62 480	67 741

NORWEGIAN UNIVERSITY OF LIFE SCIENCES  
[www.umb.no/english](http://www.umb.no/english)

DEPT. OF ECOLOGY AND MANAGEMENT OF NATURAL RESOURCES

[www.umb.no/ina](http://www.umb.no/ina)

E-mail: [ina@umb.no](mailto:ina@umb.no)

Phone: +47- 64 96 58 00

Fax: +47- 64 96 58 01

